



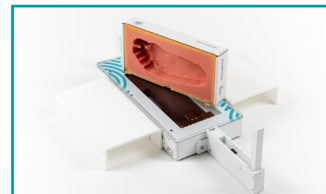
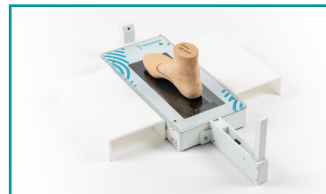
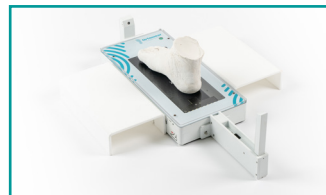
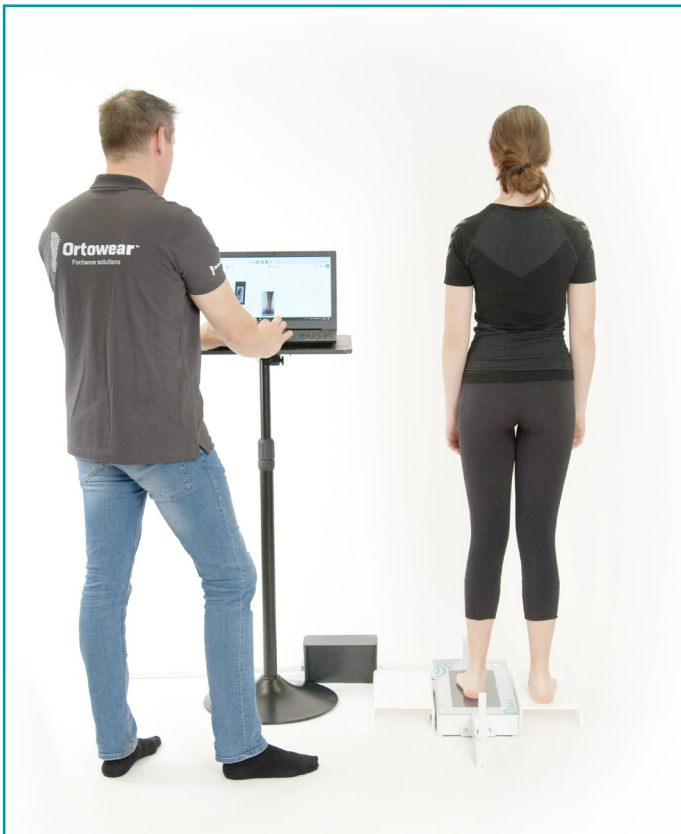
Ortowear™

Footwear solutions

3D Laser Foot Plantar Scanner from Ortowear (3DP2)

FEATURES

- 2,9 sec. for 3D scan (one direction). 5,8 sec. for surface texture (two directions)
- Compact
- Normal office lighting, no dark room
- Heel laser and camera for heel analysis
- 3D (STL/WRL), 2D color (plantar and heel)
- Large scan area
- No calibration required
- Easy to use
- Compatible with all larger CAD/CAM systems
- Foot metrics, shoe size, arch type, heel type
- Foot report and annotation with diagnosis



Contact

Ortowear, Mikkerten 21, DK-6715 Esbjerg N
Phone +45 4693 468



Ortowear™

Footwear solutions

MATERIALS TO SCAN

Objects: Plantar foot, un-loaded, partial loaded, full load, foam boxes, casts (positive and negative)

Dimensions: Max. 330 (L) x 140 (B) x 80 (H) mm

Min. 40 (L) x 18 (B) x 0 (H) mm

Max load: 180 kg

Not possible to scan: Shiny, transparent and black objects

SPECIFICATIONS

Dimensions: 490 (L) x 230 (W) x 69 (H) mm

Power supply: 110-240V 50/60 Hz

Weight: 6,8 kg

Normal scan speed: 2,9 sec.(Atom Z8350)

High scan speed: 1,8 sec. (I5-6200U)

Output data: STL, VRML, JPG

Accuracy:

3D accuracy: 1.0 mm

2D resolution: 62 dpi

One year limited warranty. Possibility to extend

Operational environment:

Temperature: 15-40 °C. Humidity: 30-70 %.

PC DEMANDS

Optimal PC specifications

OS Windows 10, I5-6200U, RAM 4 GB

HDD 200 GB, PORT 1 x USB

Connection: USB cable

